

## BEERS & CIDERS

DRAUGHT	Half	Pint
<b>ASAHI 5.2% ABV</b> Japanese Premium Rice Lager, Clean, Crisp & Light.	<b>3.25</b>	<b>5.75</b>
<b>BROOKLYN LAGER 5.2% ABV</b> Bold fruity lager with Caramel notes.	<b>3.0</b>	<b>5.5</b>
<b>BROOKLYN PILSNER 4.6% ABV</b> Crisp, Bright & Refreshing.	<b>3.0</b>	<b>5.5</b>
<b>BROOKLYN DEFENDER IPA 5.5% ABV</b> Packed with fruity, tropical & refreshing hops.	<b>3.0</b>	<b>5.5</b>
<b>BAD APPLE CIDER 5.1% ABV</b> Sweet, spicy apples giving a crisp, dry finish.	<b>3.0</b>	<b>5.5</b>
<b>ROBEER 4% ABV</b> House lager, crisp and quirky	<b>2.75</b>	<b>4.5</b>

## BOTTLES

<b>REKORDERLIG 4% ABV £5.50</b> Made in Sweeden with pure spring water, a beautifully refreshing cider. perfect for those sunny days Ask our servers for flavours.
<b>TIGER BEER 4.8% ABV £5.0</b> Clean, refreshing and full-bodied premium lager.
<b>ASAHI 0% £3.75</b> The exact same signature crisp, refreshing, super dry taste that Asahi is known for!
<b>TINY REBEL CLUB TROPICANA 0% £3.75</b> A non-alcoholic party in a can. This is what happens when you slice pineapples, squeeze mangoes, crush peaches and pummel passionfruit into a Non-Alc IPA.
<b>REKORDERLIG 0% £4.0</b> Ask our servers for the flavour choices.

## GINS

CHOOSE A SINGLE OR DOUBLE, PAIRED WITH ONE OF OUR FRANKLIN TONICS

	Sgl	DbI		Sgl	DbI
<b>ROKU 43% ABV</b> Our house gin by the Suntory range, Roku translates to 6, there are 6 botanicals perfectly crafted as only apan knows how into this amazing gin.	<b>£8.0</b>	<b>£10.5</b>	<b>BOE RASPBERRY AND SWEET BASIL 41.5% ABV</b> Created in small batches, award winning gin carefully blended producing bold, beautiful flavours of raspberries and a gentle hint of sweet basil.	<b>£5.0</b>	<b>£7.5</b>
<b>TANQUERAY NO.10 47.3% ABV</b> Distilled in small batches packed with grapefruits, oranges, lime and chamomile flowers. Tanqueray 10 brings a citrus explosion with every sip.	<b>£7.5</b>	<b>£10.0</b>	<b>KIN NO BI. 45.7% ABV</b> Created with Japanese botanicals such as yellow yuzu from the north of Kyoto Prefecture, hinoki wood chips (Japanese cypress), bamboo and gyokuro tea.	<b>£10.0</b>	<b>£12.5</b>
<b>TARSIER SOUTH-EAST ASIAN SPICED GIN 45% ABV</b> Authentic taste of South-Asia; distilled with Thai sweet basil, galangal and kampfot Pepper. Citrus forward gin with aromatic and savoury notes.	<b>£7.0</b>	<b>£9.50</b>	<b>SIPSMITH LEMON DRIZZLE 40% ABV</b> A gin of beauty, a light, bright lemony gin with a zesty, warming citrus zing.	<b>£7.50</b>	<b>£10</b>
<b>HENDRICKS 41.4% ABV</b> Handcrafted gin with traditional botanicals, juniper, coriander, and citrus but the special infusion of cucumber and rose petals creates a unique and unexpected flavour.	<b>£7.0</b>	<b>£9.25</b>	<b>WHITLEY NEILL WATERMELON AND KIWI 43% ABV</b> Inspired by Mauritius, this gin is a stunning mix of tropical flavours from ripe and bright kiwis and watermelon with summer vibes in mind.	<b>£6.50</b>	<b>£9</b>

## SOFT DRINKS

<b>COKE, COKE ZERO, DIET COKE, LEMONADE</b>	<b>Half 1.7</b>	<b>Pint 3.5</b>	<b>JUICES</b>	<b>2.5</b>
<b>TING 330ml</b> A refreshing & zesty grapefruit soda.			Orange, Apple, Cranberry or Pineapple.	
<b>LEMONAID 330ml</b> Drinking helps. A soft drink created from fair-trade and sustainable ingredients. Available in Lime, Passionfruit and Blood Orange.			<b>BOTTLED WATER 330ml 2.5 750ml 4.0</b> Available in both Still & Sparkling.	
			<b>FRANKLIN &amp; SONS RANGE 200ml 3.0</b> Tonic, Slimline tonic, Ginger Ale, Ginger Beer, Elderflower & Cucumber tonic, Grapefruit & Bergamot, Mallorcan, Sicilian Lemon Tonic, Guava & Lime Soda.	

# ROBATARY

ASIA x THE AMERICAS

# DRINK

## COCKTAILS

### CLASSICS

<b>TOKYO ICED TEA £9</b> A Tokyo take on a long island iced tea! Triple sec, Midori, Haku vodka, Roku gin, tequila, citrus juices; topped with lemonade.
<b>MIDORI SOURS £9</b> Midori, Sugar, Pineapple Juice, Citrus Juices and Egg White. *not a fan of egg white? We also offer an alternative!
<b>PORNSTAR MARTINI £10</b> Haku vodka, Passoa, Vanilla, Passionfruit Puree, Pineapple Juice, Sugar and Lime Juice. Served with a shot of Prosecco.
<b>YUZU MARGARITA £7.50</b> Blanco tequila, Triple Sec, Lime Juice, Yuzu, Green Tea Syrup. Be sure to ask your server how sour or sweet you like it!
<b>CHERRY NOIR £8</b> Cherry Gin, Cherry Brandy, Orange, Pineapple, Lemon Juice, Orgeat and Grenadine.

### ASIAN DAISY £8.50

Taking you all the way back to our very first menu! Short, sweet and refreshing. Roku Gin, Lychee Syrup, Lime Juice.

### SUNTORY OLD FASHIONED £10

Celebrating our amazing array of Japanese whisky by the House of Suntory, we bring the fire with this smoked old fashioned. Toki Whisky, Brown Sugar, Bitters.

### GEISHA MOJITO £8.50

Cherry rum, lychee syrup, Lime Juice, Mint, Cherry Syrup.  
\*Available as a Mocktail\*

### ESPRESSO MARTINI £9

Espresso, Vanilla Vodka, Kahlua, Sugar.

### SINGAPORE SLING £8.50

Cherry Brandy, Roku Gin, Bitters, Lime Juice, Pineapple Juice and Grenadine.

### RUMBLE IN THE JUNGLE £8.5

A Robatary classic but with more rum! Old J Cherry, Old J Spiced, Havana Especial, Orange, Pineapple, Lime and Blue Curacao.

### MOMO MAI TAI £8.50

Peach and Hibiscus Liqueur, Lime Juice, Orgeat, Orange and Pineapple Juices.

## SIGNATURE COCKTAILS

### RASPBERRY AND BASIL NEGRONI £8.50

Classic negroni not for you? Our bartenders bring you an easy drinking, sweeter Negroni. Featuring our flavour changing Dragon Fruit Ice! Raspberry and Basil Gin, Martini Bianco, Bitters.

### MENEKI NEKO £9

Feeling lucky? Try our lucky cat! Mango Vodka, Passoa, Mango Puree, Pineapple Juice, Lemon Juice and Grenadine.

### SHIOMI SOURS £9

Midori, Triple Sec, Lime Juice, Sugar, Egg White.  
\*not a fan of egg white? We also offer an alternative!

### POLYNESIAN TEA £8

Vodka, Green Tea Syrup, Lime Juice and Pineapple.

### MOGADISHU £8.50

Served with a Flaming Passionfruit. Blanco Tequila, Amaretto, Blue Curacao, Apple and Grapefruit Juices, Lime Juice, and Orgeat.

### KAIKA £9.50

Haku Vodka, Hibiscus Gin, Sake, Sugar and Guava Soda.

### THE O'REN ISHI £8.50

'YOU AND ROBATARY HAVE UNFINISHED BUSINESS' - INSPIRED BY KILL BILL Melon Liqueur, Amaretto, Haku Vodka, Lime Juice, Lemon Juice, Sugar. Splattered with Grenadine.

### PASSIONFRUIT SUPPAI £8.50

Roku Gin, Amaretto, Lemon Juice, Passionfruit Puree and Cherry Brandy.

## WHITE WINE

### CINTILLA WHITE, PENINSULA DE SETUBAL

Peninsula de Setubal, Portugal 12% ABV

An intense, fruity aroma with a hint of peach and warming ginger.

### CHARDONNAY, ANDELUNA '1300', UCO VALLEY

Uco Valley, Mendoza 13% ABV

A refreshing, unoaked Chardonnay showing pineapple and pear flavours with a crisp finish.

### PINOT GRIGIO, NOVITA, VENEZIE

Venezie, Italy 12% ABV

A fresh, clean & crisp Pinot Grigio with vibrant pear & citrus flavours.

### SAUVIGNON BLANC 'TUATARA BAY', MARLBOROUGH

Marlborough, New Zealand 13% ABV

A dry, crisp wine with classic Marlborough herbaceous flavours of gooseberry, celery salt and a zesty finish.

### RIESLING, 'ORIGIN', MARLBROUGH, SAINT CLAIR

Marlborough, New Zealand 10.5% ABV

Fragrant notes of Kaffir lime, grapefruit and mandarin layered with hints of orange blossom and beeswax. The fresh citrus flavours lead to a delicate sweetness for a smooth finish.

### RIOJA BLANCO, SPAIN, NIVARIUS

Rioja, Spain 14% ABV

Intense, fruity notes of zesty citrus, ripe apple and pear are complemented by white floral blossom and mineral nuances. Fresh and beautifully balanced, with creamy texture and a long finish.

	175ml	250ml	Btl
CINTILLA WHITE, PENINSULA DE SETUBAL	5.5	7.5	19.0
CHARDONNAY, ANDELUNA '1300', UCO VALLEY	8.0	10.5	28.5
PINOT GRIGIO, NOVITA, VENEZIE	6.5	8.5	20.0
SAUVIGNON BLANC 'TUATARA BAY', MARLBOROUGH	8.0	10.5	30.0
RIESLING, 'ORIGIN', MARLBROUGH, SAINT CLAIR	9.0	12.0	28.5
RIOJA BLANCO, SPAIN, NIVARIUS	8.5	10.5	26

## RED WINE

### MERLOT, TIERRA ANTICA

Valle Central, Chile 13% ABV

Forest fruit aromas of juicy cherries, plums and blackberries with a hint of chocolate on the finish.

### CABERNET SAUVIGNION, NO ES PITUKO

Valle de Curcio, Chile 13.5% ABV

A vibrant and intense Cabernet Sauvignon slightly cloudy due to the natural vinification with an inviting aroma of raspberries, chocolate and liquorice.

### SHIRAZ, FOUNDSTONE

South Eastern Australia 14.5% ABV

A big, bold shiraz offering generous notes of rich black fruits, coffee, vanilla and caramel along with toasty, sweet oak

### PINOT NOIR 'ORIGIN', MARLBOROUGH, SAINT CLAIR

Marlborough, New Zealand 13.5% ABV

Aromas of ripe red berries are interlaced with spice and blackcurrant bud. The palate is full and rich, with flavours of vibrant red berries, layered with warm, spiced fruit through to a silky finish.

### MALBEC, PIATTELLE VINEYARDS,

Cafayate, Argentina 14.5% ABV

An elegant and fruit driven malbec, with a fruity bouquet of blackberry and violet. Aromatic wild herbs & graphite give a long lingering finish to this wine.

	175ml	250ml	Btl
MERLOT, TIERRA ANTICA	6.5	8.5	20.0
CABERNET SAUVIGNION, NO ES PITUKO	6.25	8.5	25.0
SHIRAZ, FOUNDSTONE	6.75	8.75	22.0
PINOT NOIR 'ORIGIN', MARLBOROUGH, SAINT CLAIR	9.5	12.0	30.0
MALBEC, PIATTELLE VINEYARDS,	9.5	11.75	30.0

## SPARKLING

### PROSECCO, CANAL GRANDO

Veneto, Italy 11% ABV

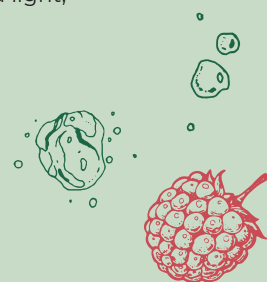
A bouquet of vibrant citrus fruits leads to a crisp and refreshing Prosecco with an irresistibly fruity finish.

### PROSECCO ROSÉ, SACCHETTO

Veneto, Italy 11% ABV

A blush pink sparkling Rosé with appealing floral aromas, strawberry fruits and light, soft bubbles.

	175ml	Btl
PROSECCO, CANAL GRANDO	6.5	27.5
PROSECCO ROSÉ, SACCHETTO	6.75	30.0



## CHAMPAGNE

### COLLET BRUT NV, CHAMPAGNE

Champagne, France 12.5% ABV

Aromas of white flowers, lemon zest quince and white peach are combined with delicate hints of spice and anise. Refreshing yet complex with a wonderful fresh finish.

### COLLET BRUT ROSÉ NV, CHAMPAGNE

Champagne, France 12.5% ABV

Delicate aromas of mandarin, peach, mulberries and raspberries lead to a refreshing hit of rich fruit on the palate.

### VEUVE CLICQOUT YELLOW LABEL NV, CHAMPAGNE

Champagne, France 12.5% ABV

A splendid smooth textured Champagne whose flavours evoke apricot, peach and vanilla pastries. Racy, with snappy acidity drives the flavours to a long, lingering finish.

	Btl
COLLET BRUT NV, CHAMPAGNE	65.0
COLLET BRUT ROSÉ NV, CHAMPAGNE	65.0
VEUVE CLICQOUT YELLOW LABEL NV, CHAMPAGNE	80.0

## ROSÉ

### ZINFANDEL, MISTY PEAK, CALIFORNIA

California, USA 10.5% ABV

Off dry in style, this Rosé offers flavours of watermelon, strawberry & white nectarine with a soft, silky finish

### PINOT GRIGIO BLUSH, VENEZIE, SACCHETTO

Veneto, Italy 12% ABV

The appealing pale blush colour of this wine is obtained from the skins of the Pinot Grigio grapes which are pink in colour. A fresh and fruity wine with a delicate flavour and an off-dry finish.

### CINTILLA ROSE, PENINSULA DE SETUBAL

Peninsula de Setubal, Portugal. 12% ABV

An enticing aroma of fresh strawberries and cream, with a soft and spicy finish.

	175ml	250ml	Btl
ZINFANDEL, MISTY PEAK, CALIFORNIA	6.75	8.5	22.0
PINOT GRIGIO BLUSH, VENEZIE, SACCHETTO	7.0	9.0	23.5
CINTILLA ROSE, PENINSULA DE SETUBAL	5.5	7.5	19.0

